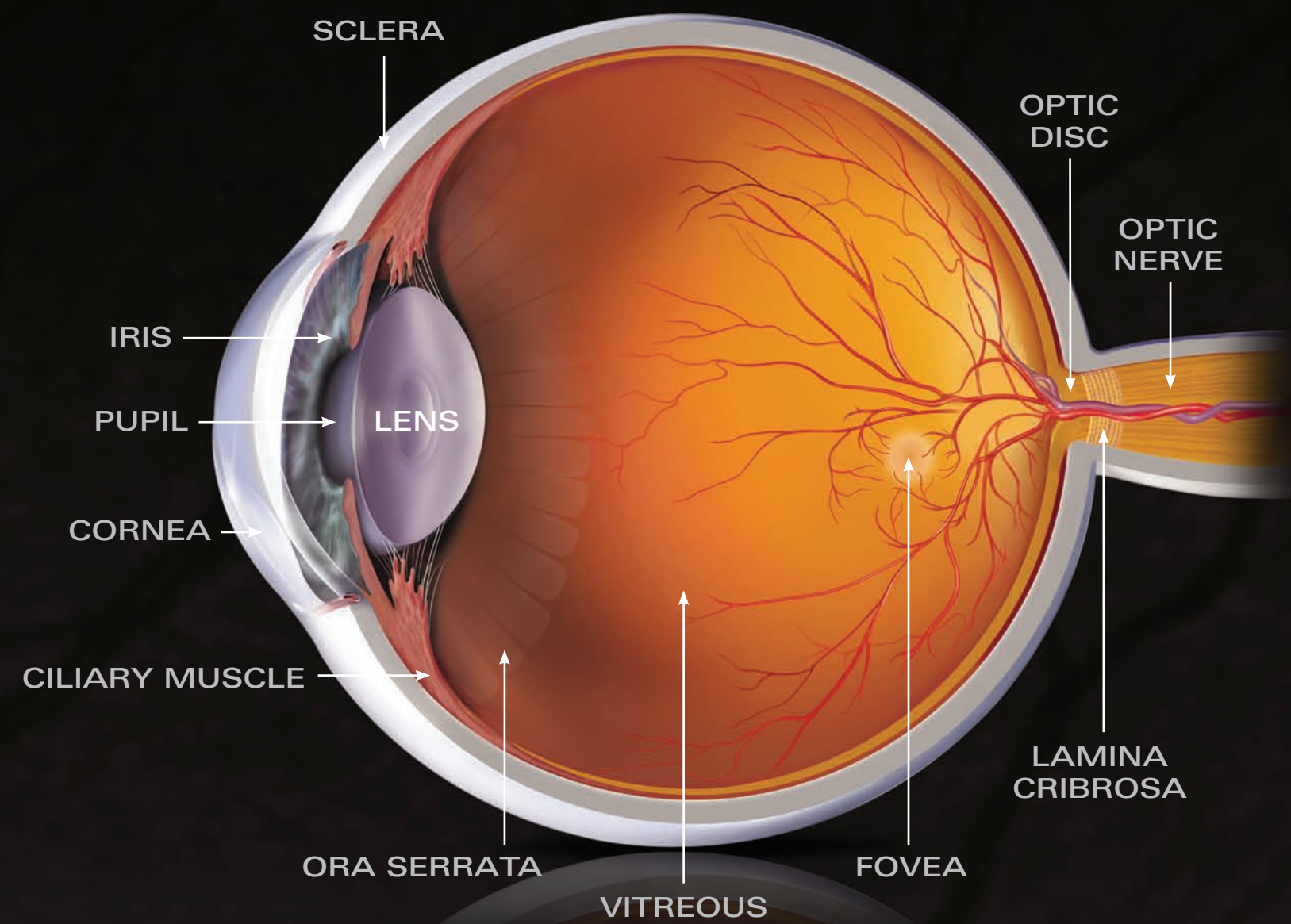
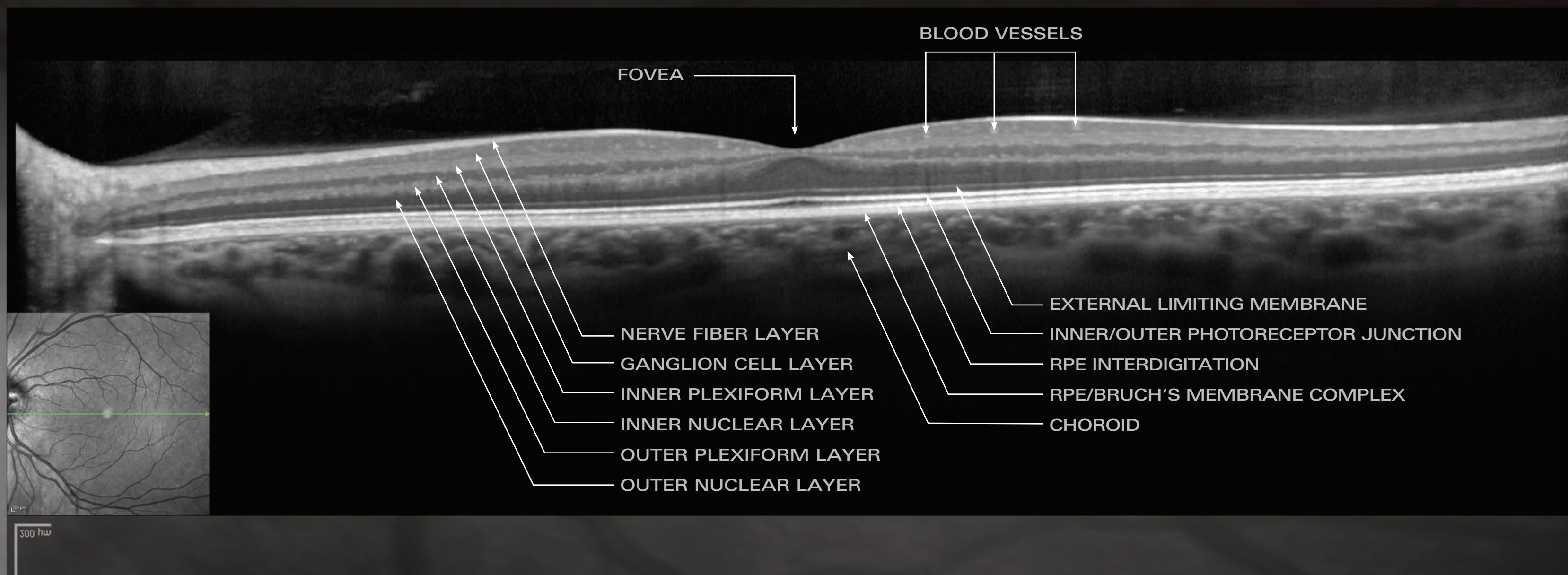


An Advanced View of the Eye

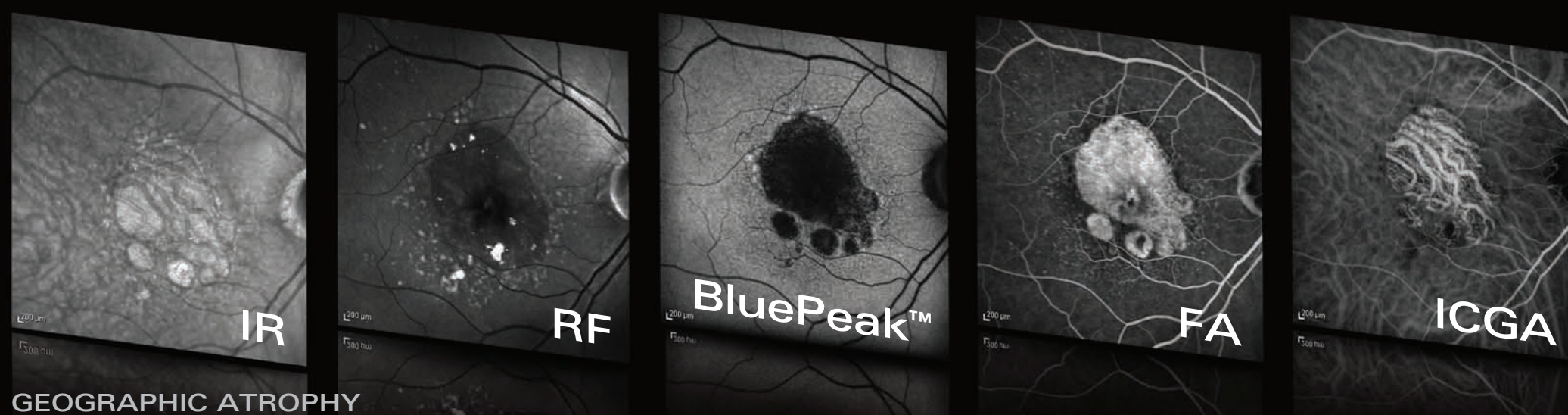


Normal Healthy Eye

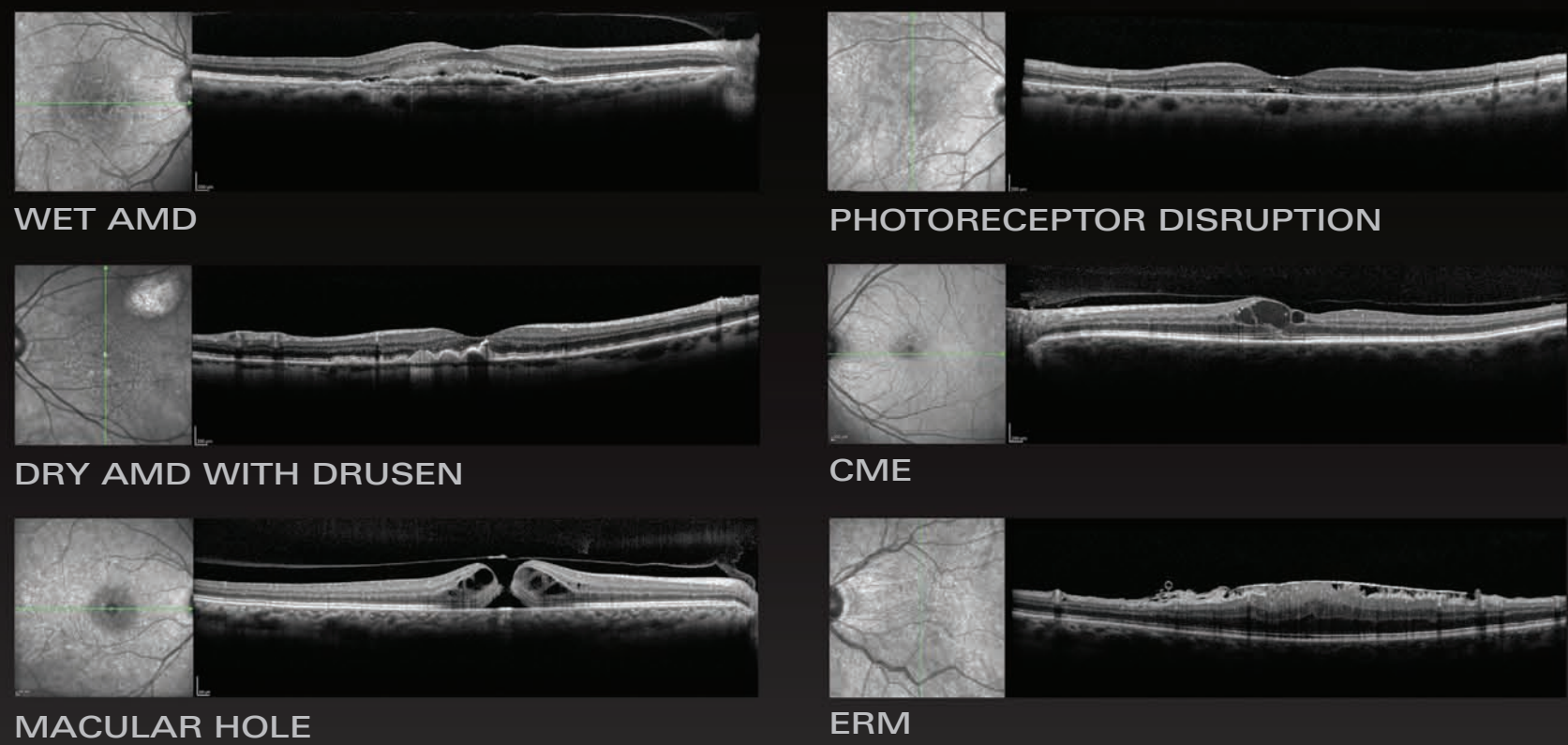


Illuminating Retinal Diseases

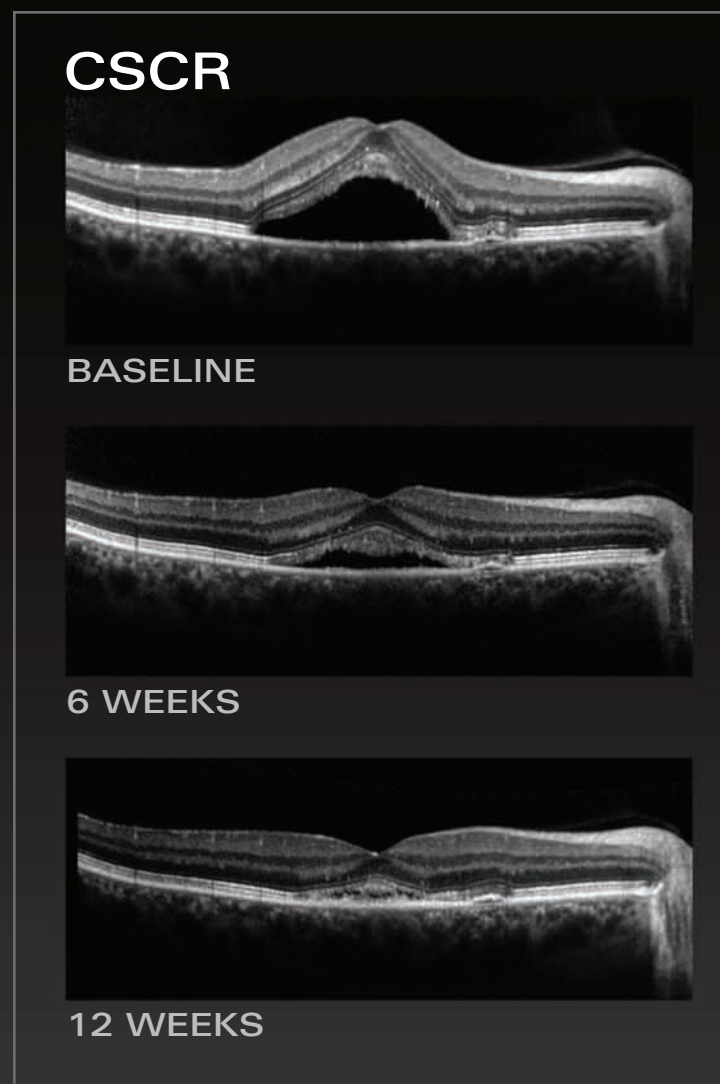
Multi-Modality Imaging



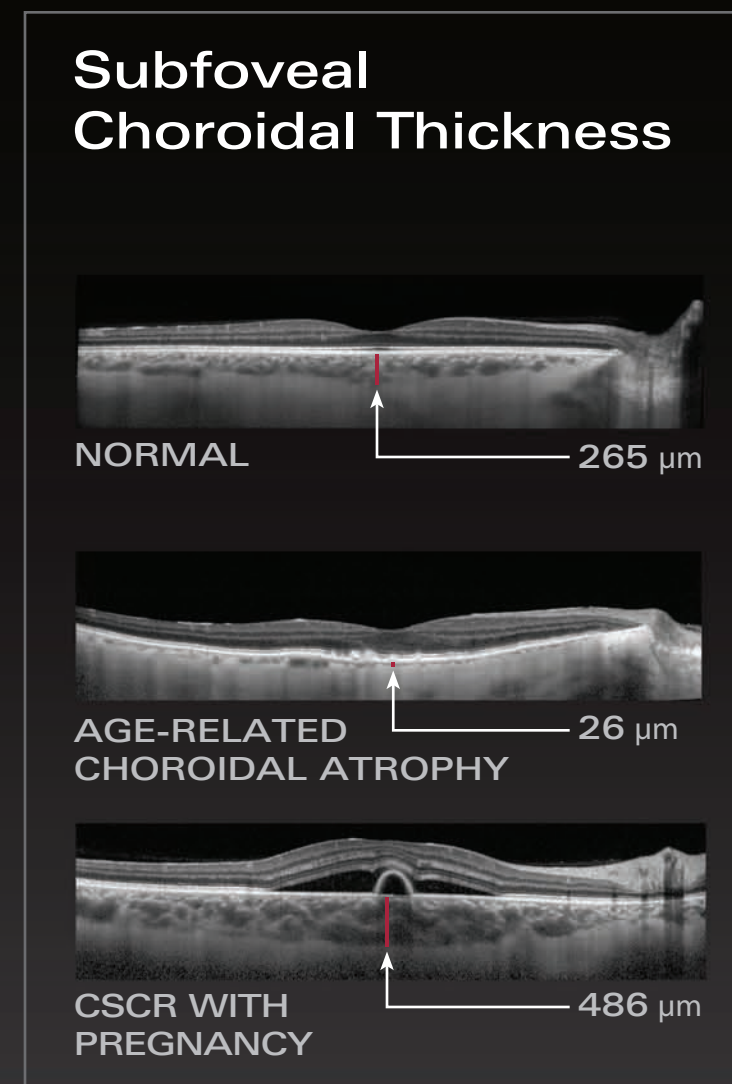
Subtle Detail



Precision in Monitoring Change



Enhanced Depth Imaging



Images courtesy of Jeffrey Heier, MD; Giovanni Staurenghi, MD; and Richard Spaide, MD

SPECTRALIS®

HEIDELBERG ENGINEERING

Corporate Headquarters
Heidelberg Engineering GmbH • Tiergartenstr. 15 • 69121 Heidelberg • Germany
Phone +49 6221 6463-0 • Fax +49 6221 646362 • www.HeidelbergEngineering.de

U.S.A.
Heidelberg Engineering, Inc. • 1808 Aston Avenue, Suite 130 • Carlsbad, CA 92008
Phone 760 536-7000 • Fax 760 536-7100 • www.HeidelbergEngineering.com

SPECTRALIS and BluePeak are either registered trademarks or trademarks of Heidelberg Engineering, Inc., or Heidelberg Engineering GmbH. © 2011 Heidelberg Engineering, Inc. All rights reserved. 2367